

Chapter 14:

CULTURAL HERITAGE

Table of Contents

List of Figures	262
14 CULTURAL HERITAGE	263
14.1 Introduction.....	263
14.2 Methodology.....	263
14.3 Existing Environment.....	263
14.4 Archaeological Heritage	264
14.4.1 Recorded Monuments	264
14.4.1 Record of Protected Structures	264
14.5 Cultural Heritage	264
14.6 Material Assets	265
14.7 Natural Assets	265
14.8 Transport Network	265
14.9 Settlements	265
14.11 Potential Negative Impacts.....	265
14.11.1 Potential Negative Impacts on Cultural Assets & Heritage	265
14.12 Mitigation Measures	265
14.12.1 Mitigation Measures for Cultural Assets & Heritage	265
14.13 References	266

List of Figures

Figure 14.1: Protected Structures and Recorded Monuments near the site	264
--	-----

14 CULTURAL HERITAGE

14.1 Introduction

This Chapter of the remedial Environmental Impact Assessment Report (rEIAR) evaluates the significant effects, if any, on the cultural heritage, archaeology and architecture that can reasonably be expected to occur, or have already occurred, as a result of the quarry development. An impact assessment and mitigation strategy has been prepared. The scope of this Chapter includes:

- An assessment and description of the archaeological heritage of the area.
- An assessment and description of the cultural heritage of the area.
- A recommendation of mitigation or remedial measures to reduce or mitigate against any potential impacts.

14.2 Methodology

This study complies with the requirements of Directive EIA 2014/52/EU and is an assessment of the known or potential cultural heritage resources within the general area and includes the information that may reasonably be required for reaching a reasoned conclusion on the significant effects of the project on the cultural environment, taking into account current knowledge and methods of assessment. It consists of a collation of existing written and graphic information in order to identify the likely context, character, significance and sensitivity of the known or potential cultural heritage, archaeological and structural resources using an appropriate methodology (EPA 2002 and 2003).

The study involved detailed investigation of the cultural heritage including the archaeological, architectural and historical background of the proposed development site and the surrounding area. Information was accessed from the following sources:

- Records of Monuments and Places of Donegal County Council <https://www.donegalcoco.ie/culture/heritage/archaeologicalheritage/recordofmonumentplacesrmp/> The Sites and Monuments Record which is maintained by the Department of Culture, Heritage and the Gaeltacht and can be viewed at <https://maps.archaeology.ie/HistoricEnvironment/>
- Donegal County Council 2018 – ‘*Donegal County Development Plan 2018-2024 Part B: Objectives and Policies of the Plan Chapter 7: The Natural and Built Heritage*’
- Archaeological Survey of Ireland, www.archaeology.ie
- Database of Irish Excavation Reports www.excavations.ie

14.3 Existing Environment

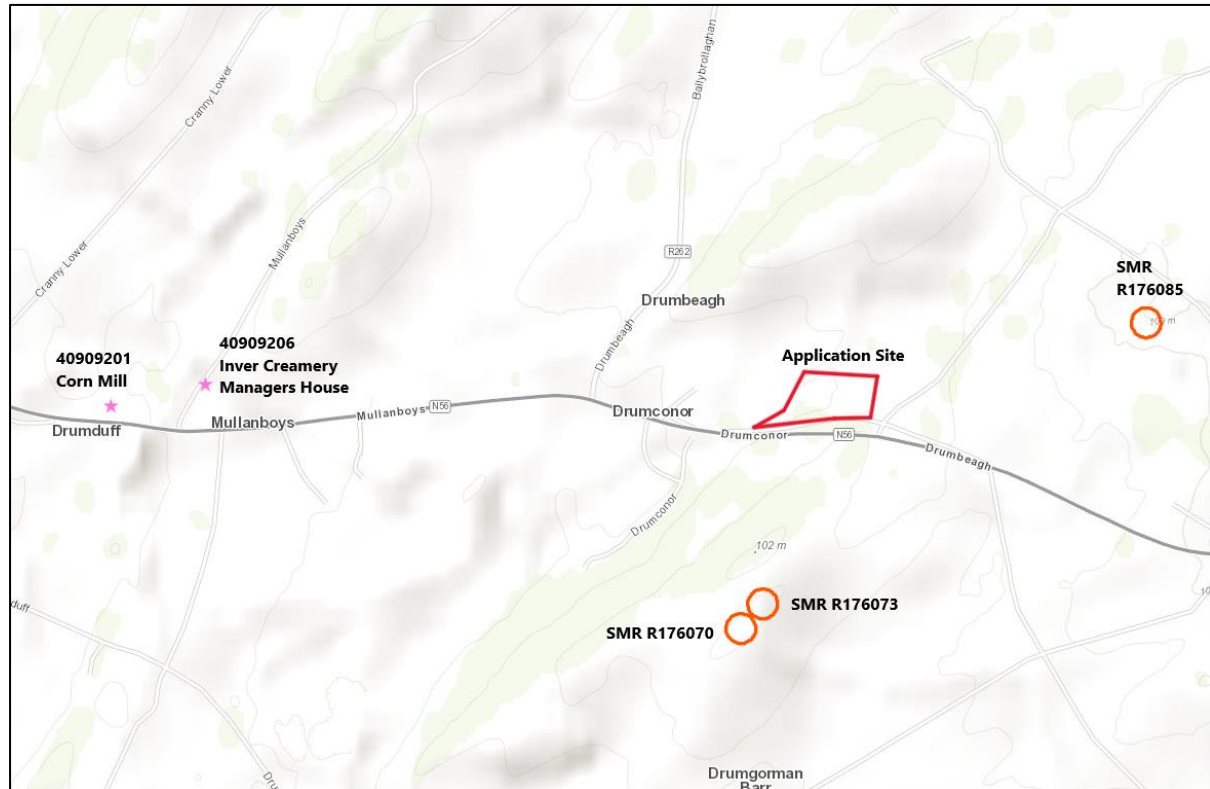
The development consists of a quarry located on a 3.45-hectare site in the rural townland of Drumbeagh. The site is located immediately north of the N56 between the villages of Mountcharles and Inver. The site is approximately 2.5 km west of Mountcharles, 3 km east of Inver and 1.7 km south of the villages of Frosses. The site is accessed off a local slip road immediately off the N56. The access road also serves the quarry owner and one other local resident. The site is surrounded by a mixture of poor-quality agricultural land, improved agricultural grassland and one-off rural houses and farmsteads. There are also peatlands and isolated forestry blocks in the surrounding area.

14.4 Archaeological Heritage

14.4.1 Recorded Monuments

There are two Recorded Archaeological Monuments which are listed on the Sites and Monuments Record within a 1 km distance from the subject site. Both are located approximately 500m south of the site. A third is located 600m to the east of the site. The location of the monuments is shown as orange circles on Figure 14.1 below.

Figure 14.1: Protected Structures and Recorded Monuments near the site



(From Donegal County Council Planning Map Portal)

14.4.1 Record of Protected Structures

The closest two protected structures are 1.4 km and 1.7 km west of the subject site. The nearest is the Inver Creamery Managers House at 1.4 km distant. There is a Corn Mill at 1.7 km distant and it is a detached 2-bay 3-storey cornmill built c. 1870 with single bay 2-storey extension to the west, with external waterwheel to the north.

Both structures are not within the 1km radius of the subject site therefore within the noise and ground vibrations limits. The effect of noise and vibrations are discussed in more detail in Chapter 9, *Noise & Vibration*, of this rEiAR. Figure 14.1 above shows as a pink star the location of the protected structures in relation to subject site.

14.5 Cultural Heritage

The effect of noise and vibrations from this subject site on architectural structures is discussed in more detail within Chapter 9, *Noise & Vibration*, of this rEiAR. Negative effects from noise and vibration after mitigation have been assessed as imperceptible. The subject site does not affect any aspect of folklore, tradition, religion and language and dialect.

14.6 Material Assets

Natural material assets include the landscape amenity value of surrounding area, air and water resources and both renewable and non-renewable resources. Impacts to both air and water quality post mitigation have been assessed as imperceptible. (See Chapters 8 & 10 of this rEIAR for full details).

Man-made material assets include local settlements, transport infrastructure and major utilities and detailed in Chapter 12, *Material Assets – Traffic*, and Chapter 13, *Material Assets – Site Services*. Negative effects from quarrying activities on material assets post mitigation have been assessed as imperceptible.

14.7 Natural Assets

The subject of landscape is addressed in Chapter 15. The resources of water and air quality are dealt with in Chapters 8 and 10. The extraction of rock from the quarry is a depletion of a non-renewable resource. The extraction of rock has adversely affected this natural resource, but this is inevitable with the nature of the project. The loss of geological resources in the area post mitigation has been assessed as Moderate (see Chapter 7, *Land, Soils & Geology*, of this rEIAR for full details). The loss of habitat within the site post mitigation has been assessed as imperceptible (see Chapters 6 and 15 of this rEIAR for full details). There are no renewable resources (wind energy, hydro power) associated with the quarry site and no impact on any renewable resources outside the site boundary is predicted to have occurred as a result of the development.

14.8 Transport Network

The subject of Traffic is addressed in Chapter 12, *Material Assets - Traffic*. The amount of vehicle movements associated with quarry activity at the site, now and in the recent past, is insignificant in comparison to the volume of traffic daily and weekly on the adjacent N56 national route. The effects of traffic on the road network and traffic volumes have been assessed as not significant.

14.9 Settlements

The subject site is located in the rural townland of Drumbeagh, Mountcharles, Co. Donegal. The area of the subject site and surrounding lands are in an area classed as a 'Structurally Weak Rural Area' as defined in the Donegal County Development Plan 2018 – 2024.

14.11 Potential Negative Impacts

14.11.1 Potential Negative Impacts on Cultural Assets & Heritage

Development has occurred without any negative effect on the cultural heritage of the area. The nearest recorded monuments are separated from the site by 500 m and a national route (N56) and no historical activity or current/future quarrying activity is likely to have any negative effect on these structures.

The closest two protected structures are well over 1 km distant from the site and not likely to have had been affected by historical quarrying activity. There are not likely to be any significant negative effects due to current/future quarrying activity at the site.

14.12 Mitigation Measures

14.12.1 Mitigation Measures for Cultural Assets & Heritage

There has not been and will not be any significant negative impacts to Cultural Assets & Heritage with the continued operation of this quarry. No mitigation measures are required in this regard.

14.13 References

- Donegal County Council, County Donegal Development Plan 2018-2024, Rural Area Types Map.
<https://donegal.maps.arcgis.com/apps/View/index.html?appid=7b44cab1b818490a9d6c264db534d4d2&extent=-9.0677,54.5439,-6.4309,55.3836>
- Excavations.ie. Database of Irish Excavation Reports. https://excavations.ie/advanced-search/?exca_a=advanced_search&y=&c=Donegal&a=&snu=&sna=&st=&rtc=&itm=&smrn=&eln=
- Records of Monuments and Places of Donegal County Council
<https://www.donegalcoco.ie/culture/heritage/archaeologicalheritage/recordofmonumentplacesrmp/>